

www.mitchelllake.org

MLA Newsletter – April 2017

Mitchell Lake Association Board

Dave Jackett, President
Dan Dorst, VP
Frank Spahn, Treasurer
Carole Duckstad, Sec
John Tyler
Mike Casanova
Pete Iversen, CAC Rep
Kevin Persinger
Cheri Nehl, editor (web & newsletter)

email the board at
mitchelllakeassociation@gmail.com



NEW: *Check out the Mitchell Lake Association Facebook Page*

*New interactive
forum where we
will share updates
on events
happening on
Mitchell Lake.*

Message from the President

Dear Neighbors and Friends of Mitchell Lake,

I hope the start of another new year finds you all well. On behalf of myself and the MLA Board I would like to thank you for your ongoing support of Mitchell Lake and the work our association is undertaking. In 2016 we started the year off right with our annual spring cleanup. In the summer we continued our partnership with the city and watershed in treating weeds in the lake and monitoring water clarity. Your dollars were also hard at work improving the shoreline as we supported efforts to restore common areas on either side of the Timber Lakes Homeowners Association beach. We also resurrected a past tradition of hosting a summer pot luck to bring neighbors together. It was a busy year and a reinvigorated Board is hard at work planning for activities in 2017. We will continue the tradition of an annual shoreline cleanup in April. Towards our mission of improving Mitchell Lake water and shoreline, we are planning several activities. These include a continuation of the \$75 reimbursement for weed harvesting, a new \$250 grant for individuals undertaking shoreline restoration or raingarden projects, and ongoing work with the city and watershed on herbicide and other lake treatments. Other projects in the works for 2017 are education opportunities, increased social media efforts, lake monitoring and storm drain marking programs. In January, I sent out a survey to the MLA email distribution list to gain insight on MLA member priorities. Please check out results on page 5 of this newsletter.

With the New Year we also saw some changes on our Board. I would like to thank Bob Shurson for his years of dedication to Mitchell Lake and a special thanks to long time president, John Tyler, who has stepped down from his role as president, but continues to serve on the board as he has done for over a decade. We also welcomed Cheri Nehl formally to the Board after many years supporting our web site. For myself, I am honored to be your new president. My wife Molly and I joined this community 3 years ago and love it here. We recently welcomed our 4th child, Xavier, into the world and he along with our other children Daniel, Claire and Nora are a big reason why I got involved with the Mitchell Lake Association.

In 2017 the city of Eden Prairie and the Watershed District plan to continue their support of our lake through herbicide treatments, weed harvesting and invasive species monitoring. The city and watershed will again offer generous grants for shoreline restoration projects with reimbursements of up to \$5,000. With all of the good work comes a concern. Mitchell Lake is currently on the Impaired Waters List which brings additional support to improve water quality. There is a possibility that this designation could be removed in the coming years. While this indicates that water quality has improved, our measurements are borderline. Our Board is working with officials to understand the implications of this change and fight for continued support of water quality efforts in either case.

Now, I would like to close by thanking all of the members for their support and encourage any non-members to consider joining the association. Our combined funds and numbers are what allow us to invest in the lake as a group and impact government decisions. For more information or to give us feedback, please visit our website at <http://mitchelllake.org> or find us on Facebook or send an email to mitchelllakeassociation@gmail.com.

Dave Jackett – MLA President

Ice Out Dates

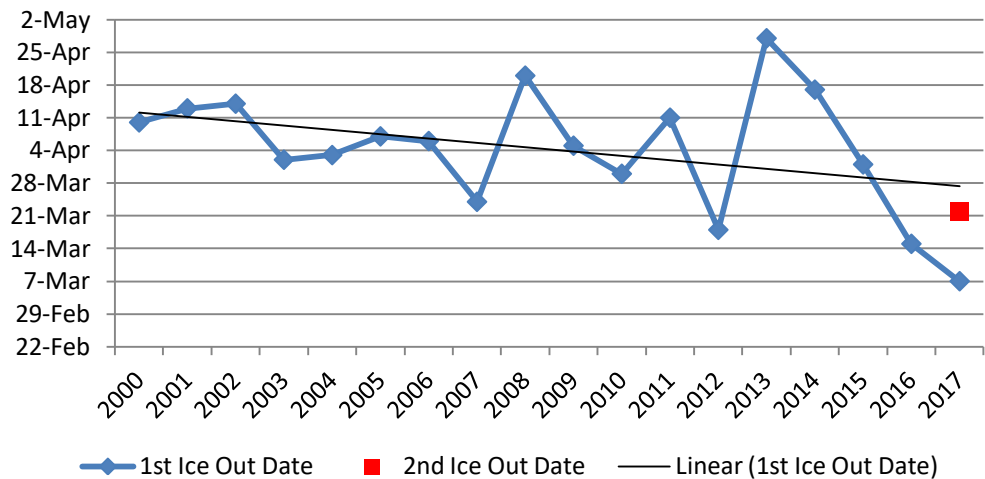
This year we had our earliest recorded ice out date occurring on March 7, which was followed up a week later by another freeze over. Our second ice out occurred on March 22 coinciding with the first full day of spring!



Mitchell Lake Ice out Definition

*Able to navigate
from the inlet
at Highway 5 to
the Miller Park
boat launch.*

Mitchell Lake - Ice Out - Day of Year



Mitchell Lake Monitoring

Did you know that the health of our lake is being monitored by the Riley Purgatory Bluff Creek Watershed District (RPBCWD), the City of Eden Prairie, and also by some of your neighbors? Here's a partial list of who is doing what:

Lake Level: RPBCWD puts out a sensor out every summer to track [lake level](#) which is shared with the DNR and posted on [DNR Lake Finder](#) site.

Aquatic plants: RPBCWD hired the University of Minnesota to do [surveys](#) over the past several years to help us know whether we need to manage invasive species.

Invasive mussels: RPBCWD collects water samples to look for the juvenile life-stage of invasive mussels. None have been detected yet.

Water quality: The City of Eden Prairie collects samples during the summer months and shares data with RPBCWD and the [MPCA](#).

Volunteer Monitoring:

- **Metropolitan Council(MCES): Citizen-Assisted Monitoring Program(CAMP)** - Volunteers collect surface water samples for laboratory analysis of phosphorus, nitrogen, and chlorophyll-a. They also obtain temperature, Secchi transparency measurements. Results posted on [Metropolitan Council website](#)
- **Minnesota Pollution Control Agency(MPCA): Citizen Monitoring Program** - Volunteers collect water clarity data as measured with a Secchi disk. Data is posted on [MPCA](#) website.
- **RPBCWD: Adopt a dock** - Volunteers hang monitoring plates from the end of their docks and check them twice a month for the presence of invasive Zebra mussels. Good news... no Zebra mussels found to date!

To learn more or get involved, please go to the "About the Lake" tab on our website www.mitchelllake.org where we also have links to the various websites and reports.



\$75 Weed Harvesting Rebate

The Mitchell Lake Association once again is offering a \$75 weed harvesting rebate to Mitchell Lake Association members that have paid their 2017 dues. Members can have their private lakeshore harvested at the same time as the City contracted vendor harvests the general lake in 2017. Watch for future notice for the City approved vendor and the date(s) the lake is to be harvested. For reimbursement, send a copy of your paid invoice directly to MLA Treasurer Frank Spahn, 17083 Terrey Pine Drive, Eden Prairie, MN 55347. Phone: 952-934-6121.



Fish Stocking

After the 2013-14 Mitchell Lake fish winterkill, the DNR stocked our lake with blue gill and bass in 2014, and with walleye fry in 2016. The DNR has no plans to continue to stock unless there is a severe winter kill due to "poor results.". The MLA board will continue to monitor the DNR fish stocking activities and explore opportunities for supplemental stocking in the future if deemed it a good use of our resources. Please see the DNR stocking report for Mitchell Lake at <http://www.dnr.state.mn.us/lakefind/lake.html?id=27007000>

Adopt a Storm Drain

Did you know that everything that is in the street ends up in our lake? When it rains, storm water carries grass clippings, leaves, cigarette butts, pesticides, fertilizers, antifreeze, paint, gasoline, motor oil, trash and animal waste through the storm drain system directly to our lake.

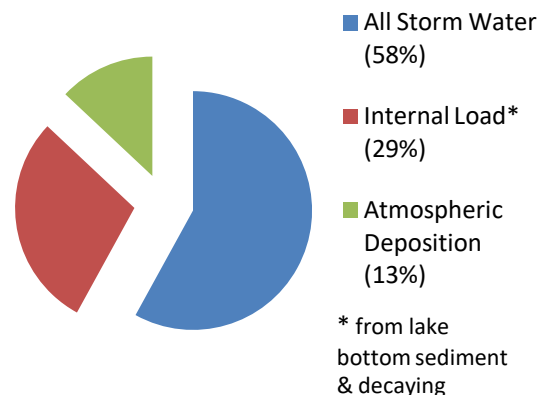
One of the biggest problems is phosphorus. Storm water is the largest source of phosphorus entering our lake. Everything that is or was living contains phosphorus. It is in leaves, lawn clippings, animal wastes, fertilizers and even soil. Excess phosphorus causes algae to grow faster than our ecosystems can handle and is the primary cause of water quality problems.

You can reduce the amount of phosphorus entering our lake by keeping your leaves and lawn clippings out of the streets.

Do you have nearby storm drains on your street? Consider making a commitment to "Adopt a Storm Drain" by clearing leaves and trash from it regularly.

Mitchell Lake Phosphorus Sources

Source: Mitchell Lake UAA Report, April 2005

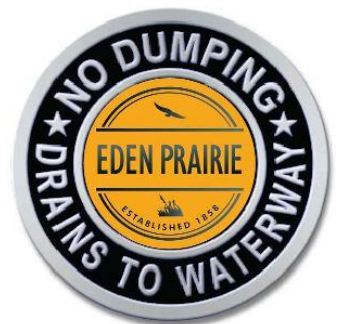


Storm Drain Marking Program

Here's a great chance to help protect our lake from pollution by organizing your family or neighbors to install storm drain markers in your neighborhood. By marking storm drains you are reminding neighbors that whatever goes into storm sewers travels untreated into our lake.

Eden Prairie provides kits to neighborhood groups to install storm drain markers, including fliers to inform and educate neighbors about surface water pollution.

For more information: Please contact City of EP environmental technician at 952-949-8313 or go to <http://www.edenprairie.org/community/sustainable-eden-prairie/water/stormwater/storm-drain-marking-program>





2017 Shoreline Maintenance Workshop!

Join your neighbors for a hands-on workshop at the Timber Lakes Restoration site sponsored by RPBCWD. Learn how to identify & eliminate common weeds to enable beneficial plants to flourish. Details will be posted on MLA website & Facebook page when available.



Shoreline Restoration/Rain Garden Rebates

The Riley Purgatory Bluff Creek Watershed District (RPBCWD) and the City of Eden Prairie are both offering rebates for native plant Shoreline restoration buffers and rain gardens.

NEW in 2017: The Mitchell Lake Association is offering a \$250 supplemental rebate to paid members that complete a RPBCWD or City of EP approved project.

How do Shoreline buffers and Rain gardens improve Water Quality?

- **Capture Pollutants** - Planting rainwater gardens and creating shoreline buffers help slow water runoff, capture pollutants that are in the rainwater and let the water infiltrate slowly into the ground
- **Mitigate Erosion** - Native vegetation slows down water runoff and their longer root systems help reduce erosion and absorb extra nutrients.
- **Provide Better Wildlife Habitat** - Native plants provide food or shelter for many song birds, butterflies or other wildlife and deter geese.

Where to find more information on rebates?

- RPBCWD Cost Share Program - Go to <http://www.rpbcwd.org>
- City of EP Landscaping for Water Quality Rebate - Go to <http://www.edenprairie.org/community/sustainable-eden-prairie/water/water-conservation-rebate-programs/landscaping-rebates>
- Mitchell Lake Association Rebate Program - Go to <http://www.mitchelllake.org> or email the MLA Board at mitchelllakeassociation@gmail.com

Timber Lakes Restoration Rejuvenation

The Timber Lakes Homeowners Association installed a shoreline restoration buffer on the commons area beach in 2008 thanks to a DNR grant. Unfortunately, in 2014, the restoration site was under water for 6 weeks when a plugged lake outlet prevented water from properly flowing out of the lake. As a result, many native plants died and invasive species grew in their place.

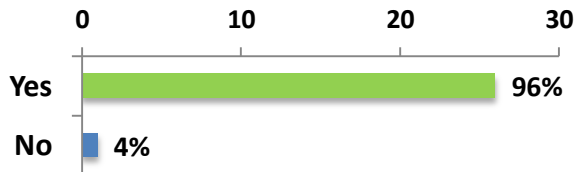
In 2015, a project plan was developed to restore the site to its pre-flood state. Thanks to grant funding from RPBCWD, City of EP and MLA we were able hire Natural Shores Technologies to remove the invasive weeds, apply mulch and plant native plants. With help from 2016 rains, the plants were quickly established and were already starting to flourish by last fall. Please walk, drive or boat by and check it out this summer!



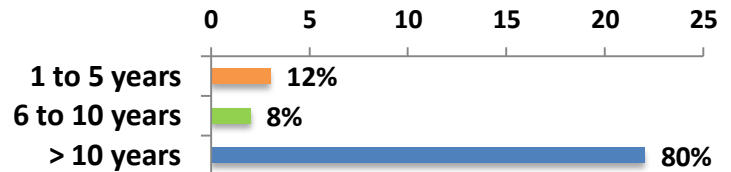
We are Listening!

Below are the results from a survey that was sent out to the MLA email distribution in January 2017. Thank you to everyone that responded. The board is using these results to help prioritize work for the coming year.

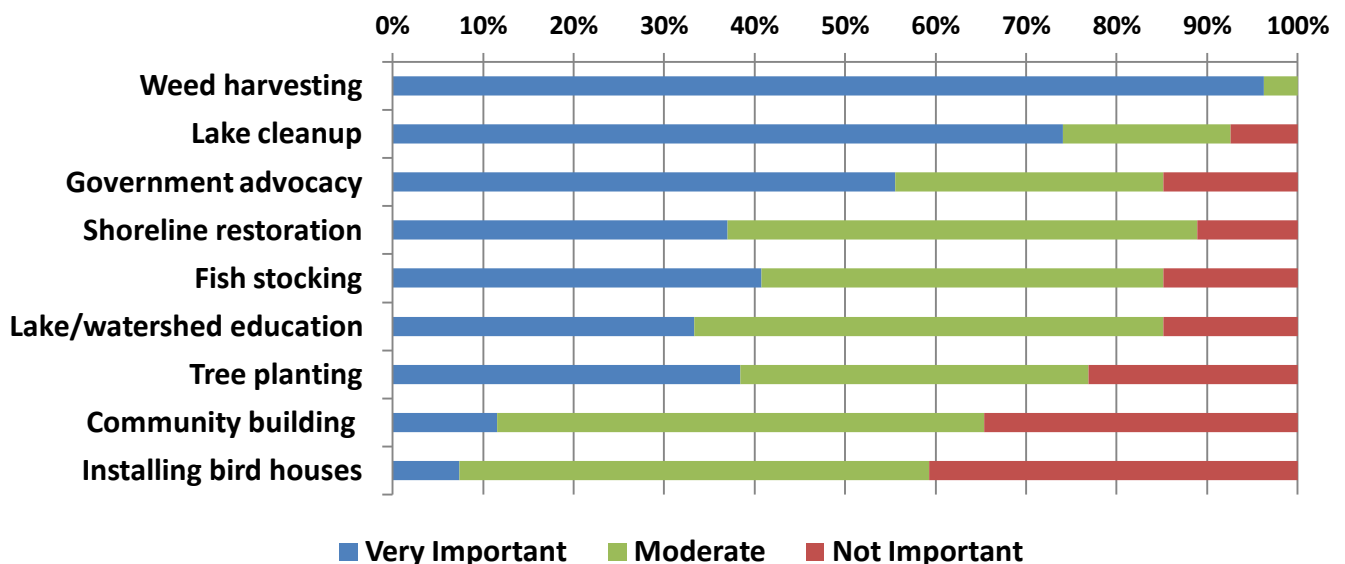
Are you a member of the Mitchell Lake Association?



How long have you lived on or near Mitchell Lake?



MLA Activity Pioritiy Ranking



What other activities would you like to see the association support?

Water Quality

- Lake or watershed research
- Improving the water quality of the lake should be the primary mission of the association and not get distracted by anything that deviates from that mission
- Maintain a focus on making the lake usable. This means clear water- both clarity and weeds.
- Assess the \$ the watershed spend on Mitchell Lake vs. other lakes and equate that to property taxes paid
- Continue to treat the lake with the appropriate chemicals to keep evasive plants at bay

Lake Ecosystem- Develop a more diverse aquatic plant population

Shoreland Restoration/Control Runoff - Keep grass clippings out of storm sewers/lake, educate/advise lakefront property owners about EP shoreland buffer requirements as well as conservation easements written into deeds

Fish - Carp (rough fish) control, no spearing of fish in the winter

Trees - More trees along hi 5



Did you know that the **RPBCWD** has a Citizen's Advisory Committee (CAC) made up of volunteers who advise the Board of Managers on water-related community concerns and issues. MLA Board Member, Pete Iversen, is a member of the CAC that meets monthly.

Watershed District CAC Update

Here is a summary of issues worked on and or completed by the CAC in 2016:

1. Partnering for stormwater reuse at Chanhassen H.S.
2. Spent lime filter at Lake Susan. Completed
3. Update on alum treatment results in Lake Riley showing positive results
4. Communication of 2017 tax levy projections communication in newsletter for district available to all.
5. Crafting a new 10 year management plan for district ongoing project. Continually engaging the communities via several methods. One of the most effective this past year was the survey which resulted in more than 500 residents who gave us their inputs which resulted in more grassroots ownership to problems and solutions.
6. Water Quality monitoring is ongoing
7. 13 Workshops and events in the communities we serve.
8. 14 Costshare Grants awarded more than \$300,000 in grants received, working with 19 partner organizations enlisting more than 35 volunteers and more than 850 youth engaged in various projects

Please look at rpbcwd.org for ongoing communications of activities

- Pete Iversen, your CAC Representative

How to Stay Current on Lake Updates

Mitchell Lake Association publishes a newsletter only once a year, but you can stay updated on lake activities throughout the year (i.e. weed harvesting rebates, City of EP and Watershed activities impacting our lake, MLA Annual meeting, etc) via several different communication vehicles...

- **Check out our website** - www.mitchelllake.org is a great source of past and present information about our lake
- **Get on our email distribution list** - If you are not receiving our email updates, please include your current email address on your membership form or email request to mitchelllakeassociation@gmail.com
- **NEW: Check out the Mitchell Lake Association Facebook page** - We invite friends and members of the Mitchell Lake Association to join our newly created Facebook Group page.



Our goal is to create an interactive forum for all of the friends of Mitchell Lake where we will share updates on events happening on Mitchell Lake. You can find us at the link below. Like our page today!

<https://www.facebook.com/mitchelllakeorg/>

MLA Annual Spring Cleanup/Picnic on April 22



Upcoming Events: Save the Dates!

Sat, Apr 22

MLA Annual Spring Lakeshore Cleanup and Picnic

Sat, May 6

EP Arbor Day Walk and Green Fair. 9am-12pm. Staring Lake Park.
Enjoy: free seedlings, tree health information, green themed vendors

June - date TBD

2017 Shoreline Maintenance Workshop - Timber Lakes Homeowners
Common area

Sat, Aug 12

MLA Summer BBQ - Miller Park

Thu, Sep 21

MLA Annual Meeting - 6-9pm. Chanhassen American Legion. 6pm Social
hour, 7pm Meeting starts



Mitchell Lake Association

Eden Prairie, Minnesota

Web: <http://www.mitchelllake.org>

Email: mitchelllakeassociation@gmail.com

Facebook: [Mitchell Lake Association](#)

MLA Membership Form

Mitchell Lake Association Mission Statement: The purpose of the Mitchell Lake Association is to create awareness, knowledge and appropriate actions with property owners, local government and community agencies to enhance the water quality and thereby the boating, fishing and aesthetic values of Mitchell Lake, as a recreational facility for today and for future generations.

We are strength in numbers, please continue as a founding member or join today.
Thank-you!

Name: _____

Address: _____

Phone: (_____)_____

E-Mail Address: _____

Date Paid _____

Please forward a \$35.00 tax deductible donation made payable to Mitchell Lake Assoc

Mitchell Lake Association
C/O Kevin Persinger
17595 Belfast Cove
Eden Prairie, MN 55347

____ I am interested in installing a lake buffer zone or rain garden on my property.

____ I am interested in attending a Shoreline Maintenance workshop.

____ I am interested in organizing a group to install Storm Drain markers in my neighborhood.

____ I am interested in volunteering for lake monitoring.

____ I am interested in volunteering for MLA annual spring lakeshore clean up/picnic.

____ I am interested in volunteering to help organize an MLA summer social event.

____ I am interested in a future board member position.

____ I would like to make an additional monetary gift of \$____ to be used for weed management

____ I would like to make an additional monetary gift of \$____ to be used for _____

Comments/Suggestions:



11th Annual Mitchell Lake Cleanup/ Lunch Social!

Date: Saturday, April 22, 2017

Time: 10 a.m. to Noon

**Join your neighbors at: Miller Park Warming House
(near the hockey rink)**

Help clean our lake by removing trash from shoreline and shallow water. Primary cleaning areas: lakeshore in park area and north shore along Highway 5. Bring gloves, rakes and waders (if you have them.)

Once again, PRIZES will be awarded for the most unusual trash found.

Lunch (hamburgers, hot dogs, chili, sides, dessert & refreshments) provided at @ noon in warming house. During lunch hear Association updates on lake improvement projects.